

Ocean and Mountain View San Salvador

\$165,000

ID: 18964

📍 Dominical, Puntarenas

- Property Type: Land
- Size: 22747 sq m
- 5.62 Acres



- Status: Active/Published
- Close To Shops
- Investment Opportunities
- Ocean View
- Acreage
- Close To Transport
- Mountain Properties
- Valley Views
- Close To Schools
- Development Farm
- Mountain View

Property Description

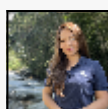
Located in San Salvador. This very private lot features a large plantel with great mountain views and a side whitewater ocean view towards Manuel Antonio. The lot is oriented facing south so you never have to sun in your eyes in the afternoon or morning while you're enjoying your patio. There is plenty of room to plant many fruit trees, or have a greenhouse and an additional plantel can be cleared above the established building area, which features even better views. The lot has legal water and electricity is right at the driveway entrance. This lot is ready to go and priced to sell. If you don't know the Diamante Valley, it is one of the most beautiful areas of Costa Rica and not far from this property is the Diamante Waterfall. The property has a small creek on one border.

Additional

- ID 18964
- Active/Published
- For Sale
- Land
- \$165,000
- View : Ocean

+506-2787-0223

50 Meters North of the Roca Verde
Hotel Dominical, Bahia Ballena,
Punteranas, Costa Rica 60504



REAL ESTATE AGENT

Ana Rodriguez

Coldwell Banker Vesta Group Dominical

[US Toll Free: 877-309-9238](tel:877-309-9238)

[Costa Rica Direct: +506-2787-0223](tel:+506-2787-0223)



COLDWELL BANKER
VESTA GROUP
DOMINICAL