

# 47 Acres of Beautiful Mountain View Farm with water sources and building sites

## \$900,000

ID: 19721

📍 Perez Zeledon, San Jose

- Property Type: Land
- Size: 190202 sq m
- 47 Acres



- Status: Active/Published
- Close To Shops
- Investment Opportunities
- Water Views
- Acreage
- Close To Transport
- Mountain Properties
- Close To Schools
- Development Farm
- Mountain View

## Property Description

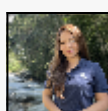
This beautiful property has what many developers are seeking. It consists of beautiful rolling hills with mountain views and many natural building sites at an altitude of nearly 1000 feet above sea level which means cooler temperatures and only 4 minute drive to Platanillo or 15 minutes to the coastal highway at Dominical, yet it feels like you are far away. It has an internal road for easy access and there is enough gravel onsite in a natural quarry that can be mined in order to maintain current road and create others. There are 2 creeks running through the property with small waterfalls and swim holes and also a natural spring. Electricity is at the base of the property. Fibre optics are easily available. Please feel free to contact me for a showing or more information.

## Additional

- ID 19721
- Active/Published
- For Sale
- Land
- \$900,000
- View : Mountain

**+506-2787-0223**

50 Meters North of the Roca Verde  
Hotel Dominical, Bahia Ballena,  
Punteranas, Costa Rica 60504



REAL ESTATE AGENT

**Ana Rodriguez**

Coldwell Banker Vesta Group Dominical

[US Toll Free: 877-309-9238](tel:877-309-9238)

[Costa Rica Direct: +506-2787-0223](tel:+506-2787-0223)



**COLDWELL BANKER**  
VESTA GROUP  
DOMINICAL