

Sugar Cane and Cattle Farm in Perez Zeledón

\$1,850,000

ID: 15186

📍 Perez Zeledon, Puntarenas

- Property Type: Land
- Size: 375120 sq m
- 92.7 Acres



- Status: Active/Published
- Close To Shops
- Investment Opportunities
- River Views
- Acreage
- Close To Transport
- Mountain Properties
- Sub Dividable
- Close To Schools
- Development Farm
- Mountain View

Property Description

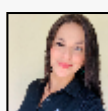
92 Acres of land located in Peñas Blancas of Pérez Zeledón, On a global scale, the land is becoming a scarce resource; the purchase of productive farmland will enable you to own a stake in the global food supply chain. This beautiful farm is surrounded by Peñas Blancas river, the Coopeagri production factory, and the Interamerican Highway. 14 Hectares have been used to produce sugar cane, the rest have been used for cattle, and can be exploited for rice or pineapple production. The farm produces approximately 9,000 tons of sugar cane per year and could hold up to 50 cattle. There is a contract with Ingenio Coopeagri meaning all the production is sold to them. Most of the water for irrigation purposes is obtained from the river. The property has big potential because of its great location. The Peñas Blancas River runs alongside the property, its capacity for irrigation purposes is not limited, water is more abundant in the rainy season, six months between June and November of each year.

Additional

- ID 15186
- Active/Published
- For Sale
- Land
- \$1,850,000
- View : River

+506-2787-0223

50 Meters North of the Roca Verde
Hotel Dominical, Bahia Ballena,
Punternas, Costa Rica 60504



REAL ESTATE AGENT

Hensy Godinez

Coldwell Banker Vesta Group

[US Toll Free: 877-309-9238](tel:877-309-9238)

[Costa Rica Direct: +506-2787-0223](tel:+506-2787-0223)



COLDWELL BANKER
VESTA GROUP
DOMINICAL